

Organizational structure of the laboratory

The NSEL belongs to the faculty of Department of Civil and Environmental Engineering. The director of the laboratory is responsible for all its activity. The department head formed the Crane Bay Committee which advises the director about the future development of the lab, policy and regulations, equipment and instrumentation, etc. The lab coordinator manages everyday activity in the laboratory: helps principal investigators in design of testing arrangements, estimates cost of testing, schedules testing projects, assigns space on testing floor, dedicates equipment, and instrumentation, and coordinates effort of principal investigators, students and staff in the laboratory. The CEE Machine Shop is involved in the NSEL activity on the bases of helping principal investigators and graduate students in building of testing arrangements for testing programs. It also provides service in moving heave equipment and specimens. Figure 1 shows the organizational structure of the NSEL.

Newmark Structural Engineering Laboratory (NSEL)

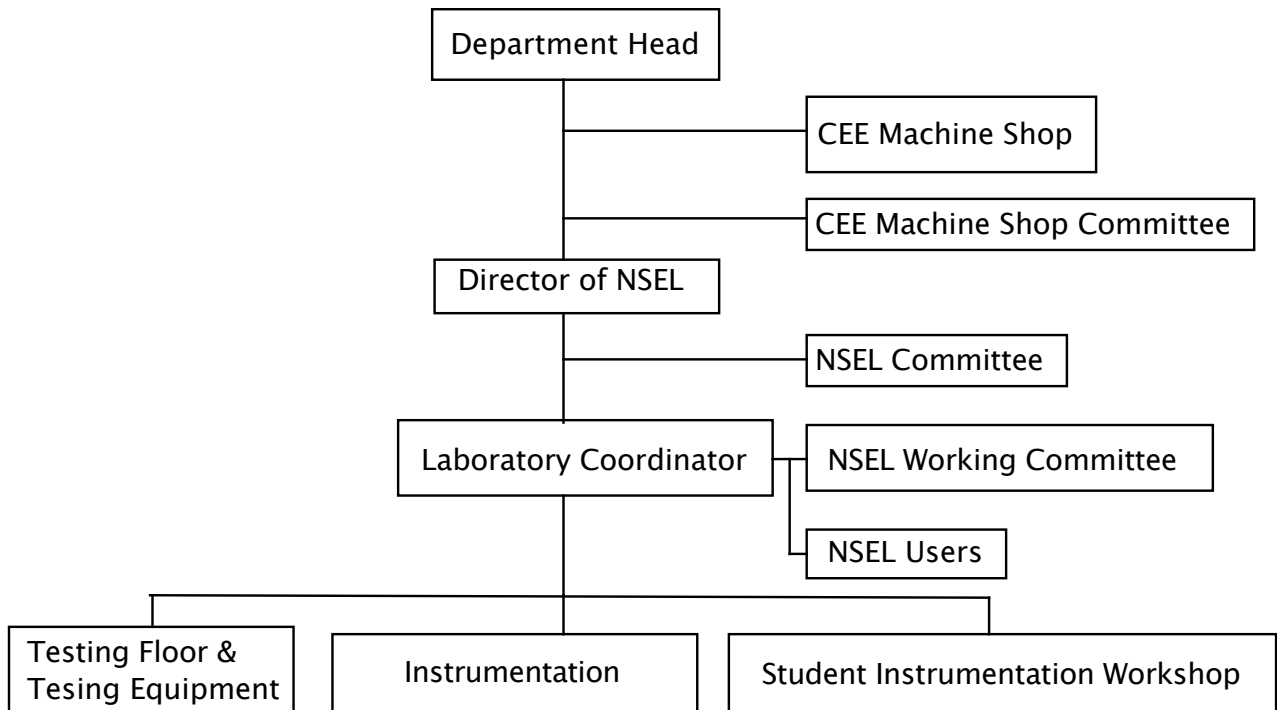


Fig. 1 Organizational Structure of NSEL.