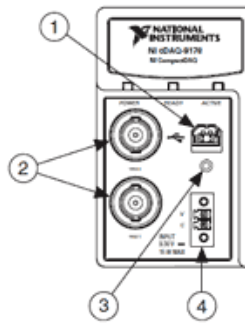




National Instrument NI cDAQ-9178 Manual

Start DAQExpress:



Step 1: Turn on the system by connecting to an outlet using output number 4 above.

Step 2: Connect the USB cord to number 1 above.

Step 3: Connect the USB to the computer, the following notification should appear:

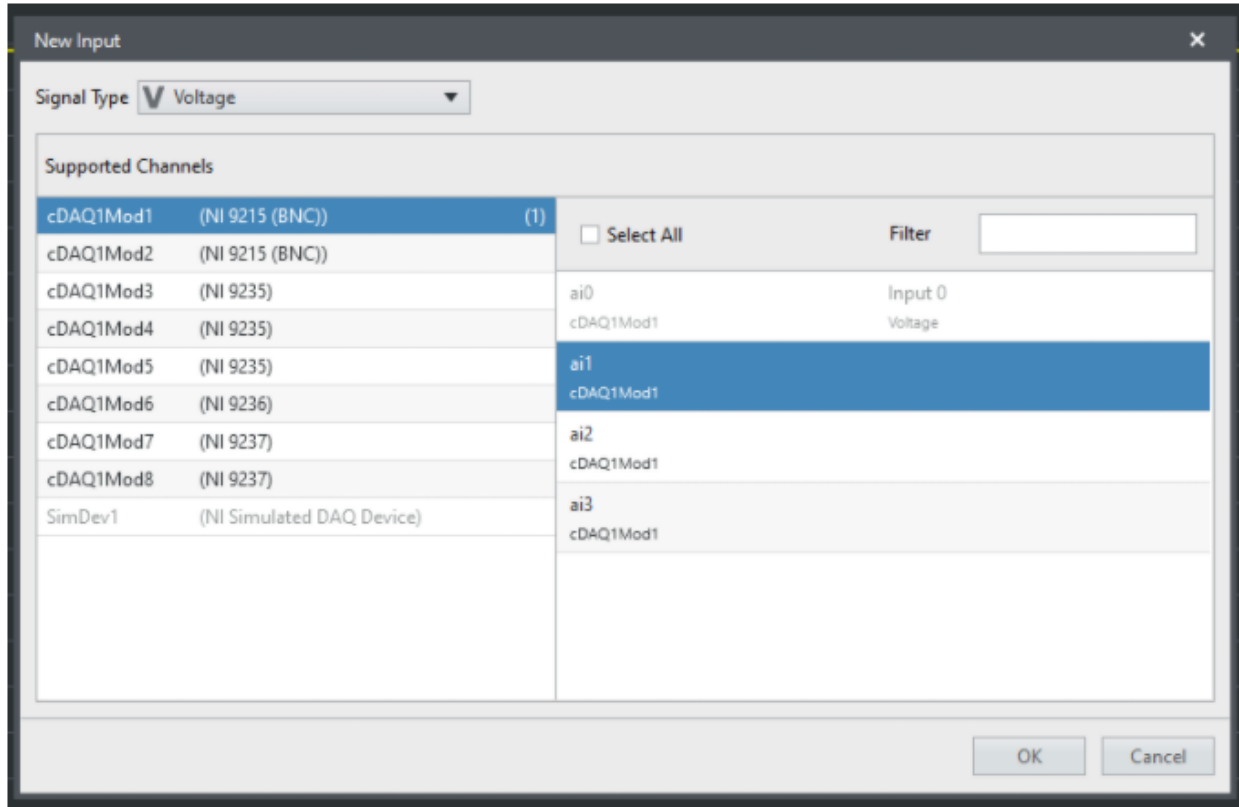
Click “Go” for “Begin an application with this device”.



Step 4: After DAQExpress loads up, select “Analog Input”

Step 5: On the bottom left of the screen, click “create new Input”

The following options should appear:



Step 6: Select the channels corresponding to the channel you have used to input the strain gauges to on the cDAQ-9178

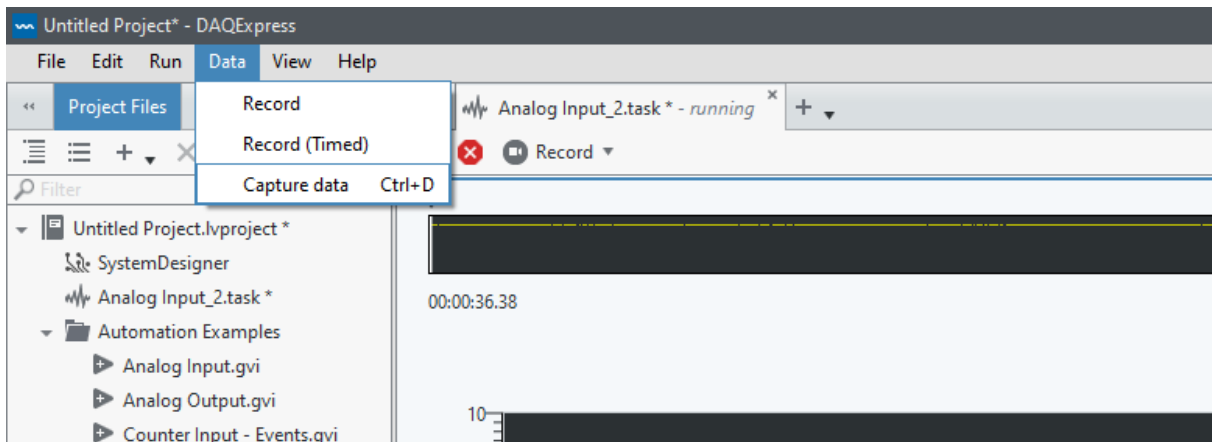
(you might need to change the “Signal Type” from voltage to anything else, depending on what is being tested)

Step 7: Click “ok”, your new data will be displayed

Input Settings:

Once you click on the different inputs at the bottom of the screen, a list of options will appear on the right. Under “Channel” you will get the option to change the units, min and max for the data provided.

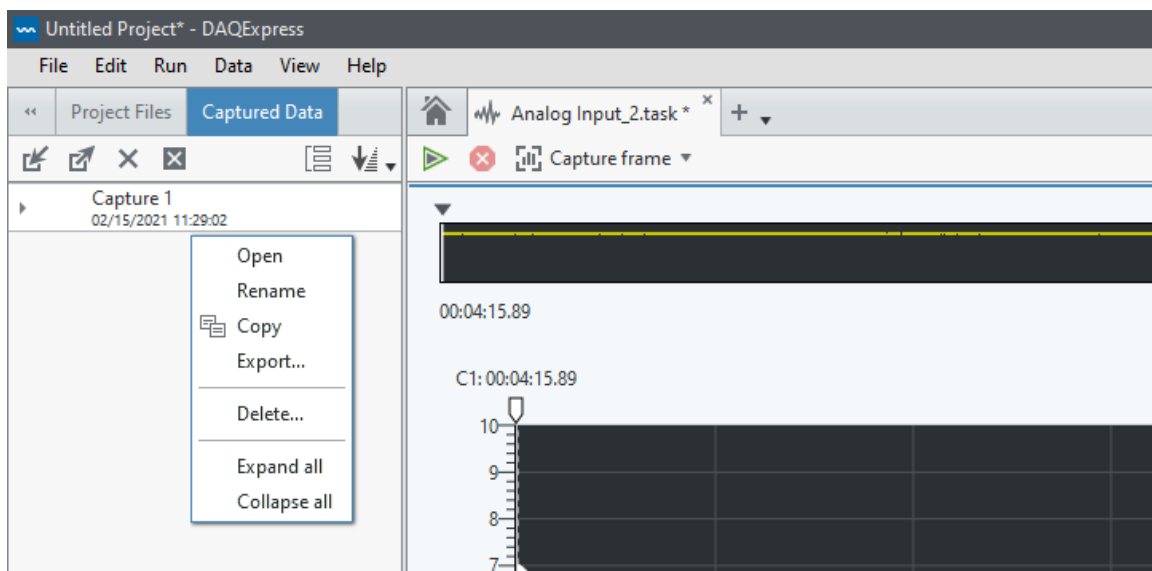
Export Data:



Step 1: Click on “Data” at the top left

Step 2: You can “Record”, “Record (Timed)”, or “Capture Data”

Step 3: Once you have captured the data, right click on the data you wish to export, the following options should appear:



Step 4: Click on export and save the data as an Excel Spread Sheet

More Information:

For more information on how to use DAQExpress, please refer to:

<https://www.youtube.com/playlist?list=PLbCk9hRe-ziEvxzUK36gdXwpRdWhvnfrN>