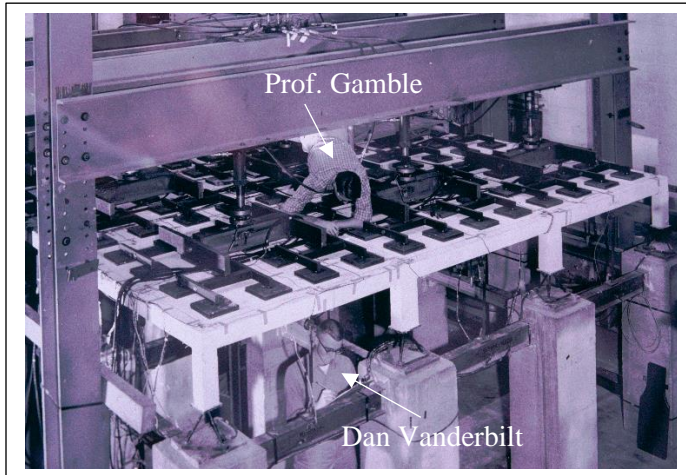
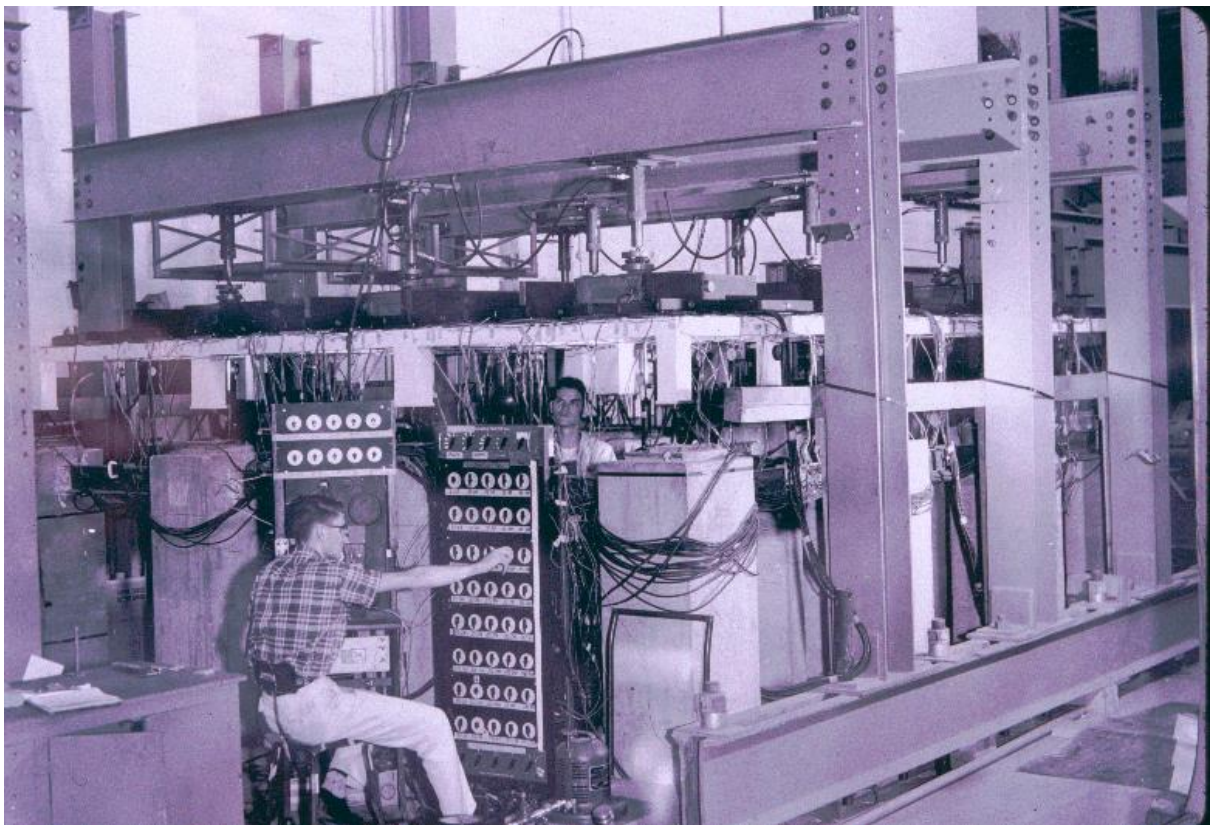


Prof. William L. GAMBLE



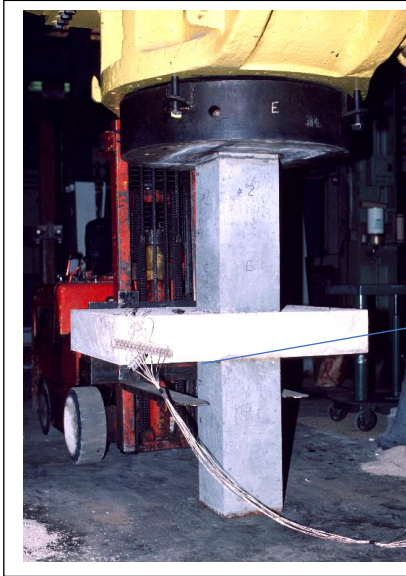
A registered Structural Engineer in the state of Illinois, Prof. GAMBLE has taught five different undergraduate and graduate courses in the areas of reinforced and prestressed concrete, as well as a course on the fire resistance of structures. He is co-author with Robert Park of New Zealand of the book "Reinforced Concrete Slabs" (Wiley, 2nd Ed., 2000). He has served as a member or chair on numerous committees within ACI.

Professor GAMBLE has been elected an Honorary Member of the American Concrete Institute (ACI) "for lifetime achievements in teaching, structural engineering and contributions to ACI; particularly in the analysis and design of buildings, bridges and tunnel systems.

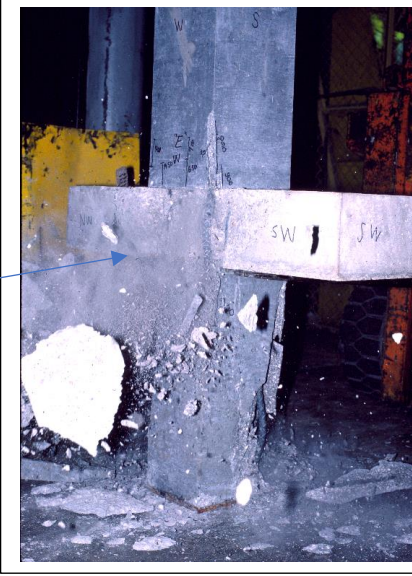


Multi-channel strain gauge system; setting up and calibration. Prof. Gamble sitting and Ned Burns standing behind the instrumentation. 1959.

Below are examples of testing setups during Prof. GAMBLE tenure in NSEL.



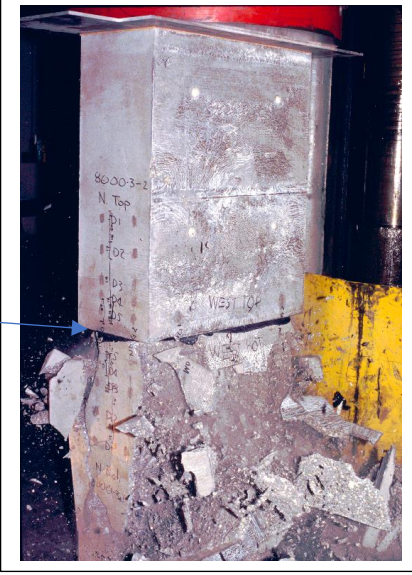
Column-Slab-Column connection tested using 3,000 kip (13 MN) Testing Frame.



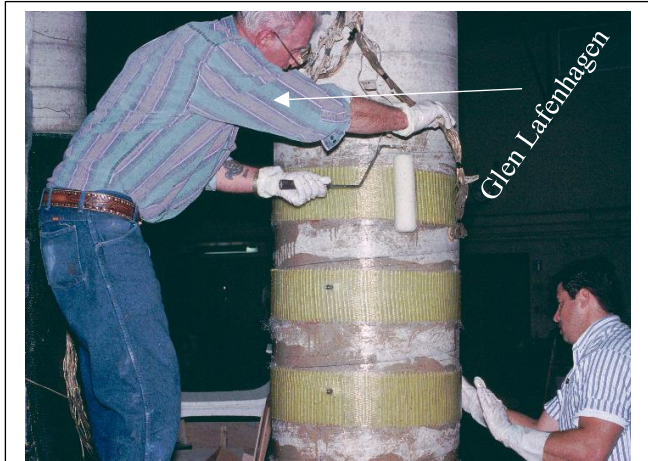
Column-Slab-Column connection at the moment of failure.



Tunnel liner tested using 3,000 kip (13 MN) Testing Frame.



Tunnel liner failed at force of 2,300 kips (10.2 MN).



Retrofitting the concrete column with fiber glass.



Testing the concrete column retrofitted with fiber glass.